



multiLift™ POOL LIFT

multiLift POOL LIFT

Distributed in SE Wisconsin through:



877-917-2273



multiLift

multiLift™ is an adaptive pool lift platform that gives customers the flexibility to have either a Fixed or Removable lift in a single integrated design.

- 3rd party tested & verified ADA Compliant
- 350 lb/159 kg lifting capacity
- Flange mounted with four anchor bolts
- Left or right side mounting
- LiftOperator™ Intelligent Control—includes 24 volt rechargeable battery
- Wheel-A-Way mobility option provides flexibility to remove the lift for events or storage
- Includes battery, charger, battery console cover, waterproof control, footrest, seat belt assembly and anchor jig



MODEL NO.	DESCRIPTION
575-0000	multiLift
575-1000	multiLift with Activation Key
575-0100	multiLift with folding seat



accessories



Arm Rests

Optional, flip-up armrests are available for all lifts. This accessory item can be retrofitted to a lift. The armrests are available in white. P/N 170-1000



Seat Pad

White, waterproof seat pad designed to enhance comfort and minimize friction. P/N 900-4000



Stability Vest

The Stability Vest was designed to assist individuals with limited or no independent upper body or trunk stability. The vest holds the user to the chair, strapping them in for support. P/N 900-2000



Covers for multiLift Models

Protect your investment with a full, all-weather cover. P/N 940-3000
Also available: protective cover for battery console only. P/N 930-1000



Pool Lift Available Sign

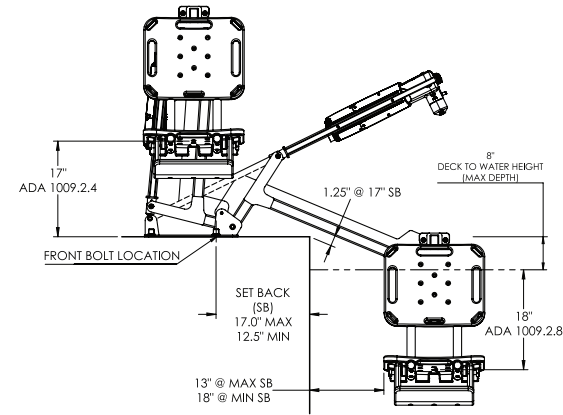
This 9" x 12" metal sign can be posted at your facility to let guests know about your pool lift. P/N 900-500



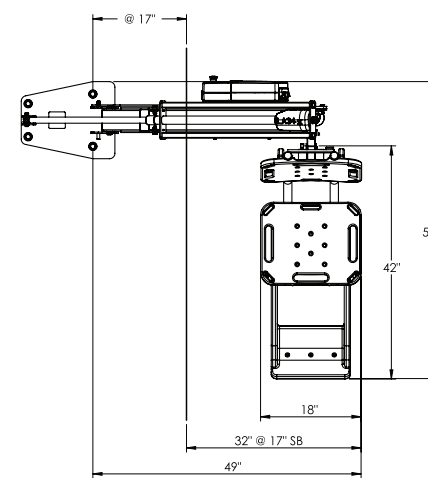
Battery & Charger

All pool lifts are powered by a 24 volt, rechargeable battery. This battery should be left on the charger when not in use. P/N LINAK Battery 100-2000, P/N Charger 100-3500
P/N LiftOperator Battery 1001495, P/N New Charger 1001530
New batteries are ONLY compatible on pool lift units with the LiftOperator Intelligent Control. Please visit our website for details.

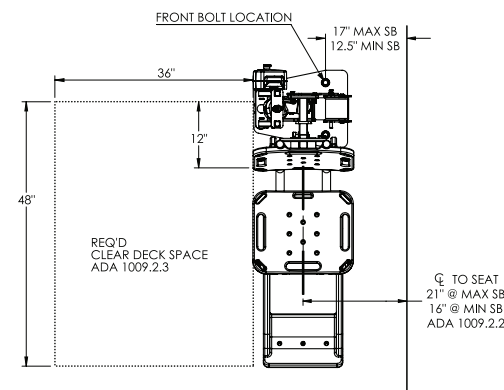
Right View



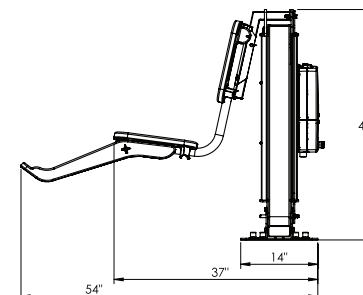
Top View (Extended)



Top View (Retracted)



Front View (Retracted)



Wheel-A-Way **NEW**

Provides flexibility to remove the lift for poolside events or seasonal storage. P/N 500-5500



Folding Seat **NEW**

Your lift can take up even less space with the optional folding seat. P/N 160-6000

multiLift™ WRITTEN SPECIFICATIONS

Lift Model Shall Be: S.R.Smith, LLC multiLift™, # 575-0000.

It shall be battery powered, comply with Americans With Disabilities Act Access Guidelines (ADAAG), and have a lifting capacity of 350 pounds. The multiLift is capable of controlled linear actuation into the pool providing steady speed, support and clearance to the user. Symmetrical design in the multiLift allows customers to install with a right or left facing chair to accommodate multiple pool geometries. Product shall include battery, charger, battery console cover, waterproof control, a footrest and seatbelt assembly.

- a. Manufacturer to provide technical support and assistance to confirm pool lift satisfies pool geometry or if another model is more appropriate.
- b. Have a LiftOperator™ Intelligent Control System with the following capabilities:
 - i. Emergency stop button.
 - ii. Emergency audible alert system capable of activation via both handheld and system control.
 - iii. Service required LED with USB port.
 - iv. Full set of operation controls on the touch pad.
 - v. IP65 rated, constructed of high impact UV plastics with conformal coded circuitry.
- c. Have a LINAK (approved for medical applications) screw/spline type actuator to provide a safe and stable stop at any point in the lifting cycle, capable of:
 - i. 18.5 inches measured from the deck to the top of the seat surface when the seat is in the raised position.
 - ii. Submerging the seat a minimum of 18 inches below the surface of the water, at a deck to water level of 6 inches maximum.
- d. Configured to facilitate ease in user transfer within clear deck space of 36 inches wide by 48 inches deep starting 12 inches from the back end of the seat (Ref. ADAAG).
- e. Seat:
 - i. Width of 18.5 inches (ADAAG Requires 16 inches).
 - ii. Back that extends 24 inches high (ADAAG Requires 12 inches).
 - iii. Ships in right seat mounting configuration (facing pool), field convertible to left.
- f. Be structurally capable of providing a stable user transfer and pass a static load test equal to 1.5 times the rated load capacity.
- g. Metallic parts (stainless steel and aluminum) to be passivated, pretreated and powder coated using a 5-step process. The process is to be validated by samples undergoing a 4,000 hour Salt Fog Test (ASTM D1654), by a recognized independent laboratory, and achieve a rating of 10 (highest possible rating). (Note: The test is the equivalent of 10 years exposure to this harsh environment.)
- h. Have a Manufacturer's Warranty:
 - i. Frame—3 Years (except powder coated finish)
 - ii. Electronic Components—2 Years (except battery)
 - iii. Batteries—1 Year, Pro-rated (90 days: 100%, 91 to 365 days: 50%)
 - iv. Have independent, third party verified ADA compliance.
 - v. Meet or exceed CE requirements (10535).
- i. Have the following optional equipment:

PART #	DESCRIPTION
900-2000	Stability Vest
500-5100	multiLift™ Cover
170-1000	Arm Rest Assembly
1001545	Two Button Control with Activation Key
500-5500	Wheel-A-Way Option